



**Keith
Ashton**

Ongar Road, Kelvedon Hatch
Brentwood



20 ONGAR ROAD

Kelvedon Hatch Brentwood, CM15 0AA

Offers In Excess Of £595,000

Beautifully styled and well-maintained throughout and with a lovely, landscaped garden which is un-overlooked from the rear, is this extended three, DOUBLE, bedroom semi-detached chalet style bungalow. The property has been extended to the rear to allow for a stunning kitchen / dining / family room and into the loft to accommodate a spacious first floor bedroom and a fully tiled en-suite bath/shower room. This lovely property is located within walking distance of Kelvedon Hatch Primary School, local shops, pubs, and surrounded by beautiful countryside walks. Brentwood Town centre and mainline train station with fast trains into London is just a short drive of around 5 miles, with bus routes directly into town on your doorstep.

THREE DOUBLE BEDROOMS
SET WELL BACK FROM THE ROAD

EXTENDED CHALET STYLE BUNGALOW
EN-SUITE BATHROOM TO MASTER
BEDROOM

BEAUTIFULLY PRESENTED THROUGHOUT
LANDSCAPED REAR GARDEN

UN-OVERLOOKED TO THE REAR
ATTACHED GARAGE & ADDITIONAL
PARKING



Description

A bright and spacious entrance hall has a double storage cupboard and stairs rising to the first floor and there are doors to all ground floor rooms. Overall, the property has three double bedrooms, two of which are to the ground floor; both having built-in storage cupboards. There is a fully tiled ground floor bathroom with tile panelled bath, wash hand basin and close coupled w.c. In addition to the conversion of the loft space, the property has been extended to the rear to create a fabulous kitchen / diner / family room. The kitchen area has been fitted in a range of white wall and base units with marble work surface over, and there is an island unit with inset 'Butler' sink and seating to one side. Integrated appliances include double oven and hob with extractor above. The family room is set in a lovely cosy corner with a spacious seating area and media wall with shelving. The remainder of the room offers ample space for dining and there are bi-folding doors which open onto the rear garden.

Rising to the first-floor level you have a large master bedroom with a range of fitted wardrobes to one wall. There is a central feature wall where you have a TV mount to one side and a dressing table area to the other. There are views from this bedroom over farmland to the rear. A door from the bedroom leads into a beautifully styled, fully tiled en-suite bath/shower room, where you will find a freestanding bath, and modern wash hand basin and w.c. Viewers will note that there is underfloor heating to all rooms on both levels, apart from the two ground floor bedrooms and ground floor bathroom.

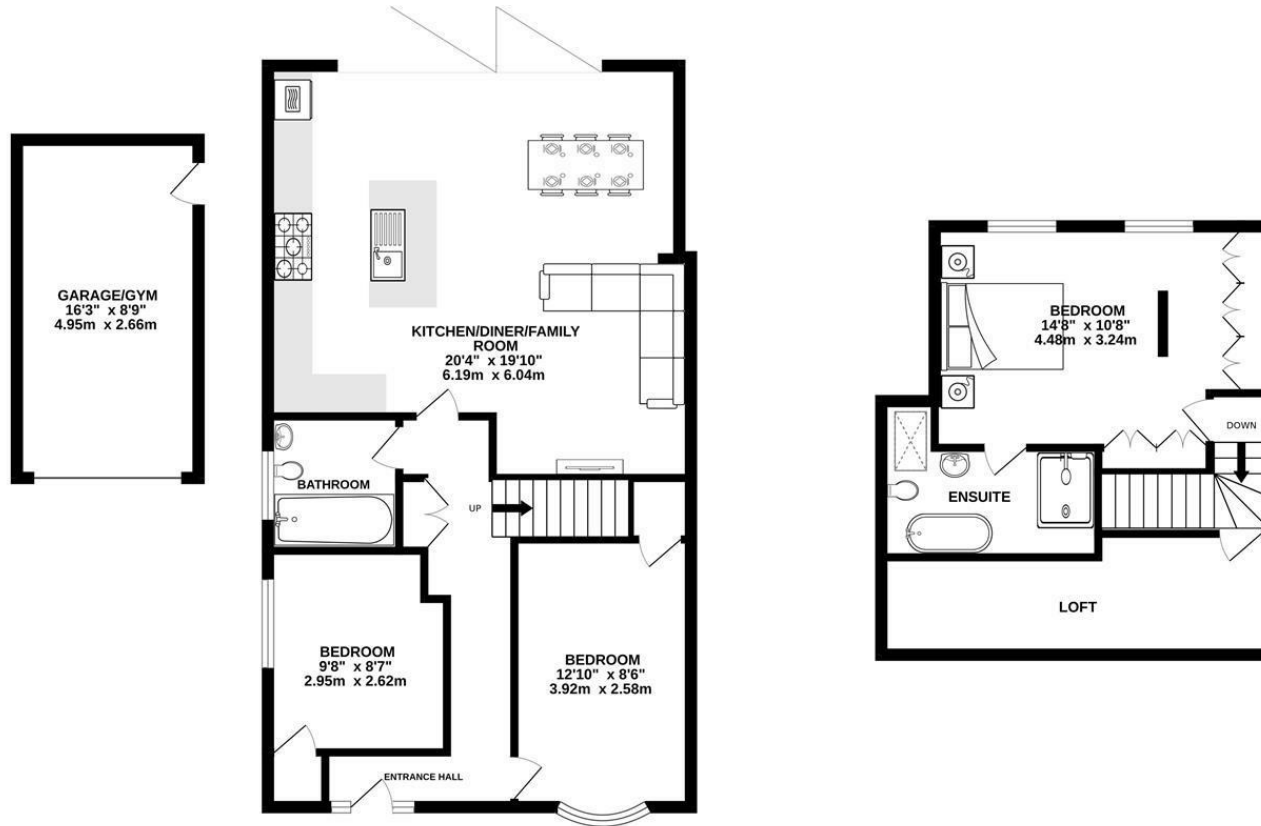
To the rear of the property, you have a lovely, landscaped garden with easy to maintain artificial lawn and a spacious paved patio with sleeper edged flower bed to one side. The property is un-overlooked from the rear and there are farmland views that can be seen from the first-floor level of the bungalow. There is pedestrian access from the rear garden through to the front, where you have ample parking. The garage is currently in use as a home gym with a partitioning to storage to the back.



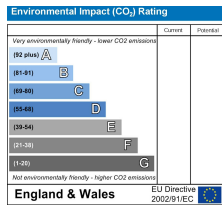
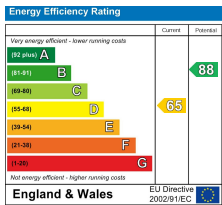


GROUND FLOOR
862 sq.ft. (80.1 sq.m.) approx.

1ST FLOOR
366 sq.ft. (34.0 sq.m.) approx.



TOTAL FLOOR AREA : 1228 sq.ft. (114.1 sq.m.) approx.
Measurements are approximate. Not to scale. Illustrative purposes only
Made with Metropix ©2025



SERVICES:
Local Authority: Brentwood
Council tax band: C
Post Code: CM15 0AA

VIEWING:
Strictly by prior arrangement with Keith Ashton Estate Agents

MORTGAGE INFORMATION: We offer the additional facility of an in-house Independent Financial Adviser who will access all mortgage lenders with the purpose of providing you with the benefit of choice. For quotations or comparables please call 01277 375757 or visit our interactive website at www.mortgagebusiness.net

We the Agent have not tested any apparatus, fittings or services for this property. The plot size is intended merely as a guide and has not been officially measured or verified by the Agent. Photographs are for illustration only and may depict items which are not for sale or included in the sale of the property. As part of the service we offer we may recommend ancillary services to you which we believe may help you with your property transaction. We wish to make you aware, that should you decide to use these services we will receive a referral fee. For full and detailed information please visit 'terms and conditions' on our website www.keithashton.co.uk

